

Asset4000



Transforming assets into
business advantage



Get Real When it Comes to Managing your Fixed Assets

Real Asset Management (RAM) is the UK's leading provider of fixed asset software, offering a range of excellent products and services designed to arm customers with a complete solution to the management of fixed assets.

Adopted by over 3,000 organisations in more than 60 countries, RAM's tenet is simple: a Real solution is a complete solution. RAM believes that effective asset management can only be achieved through the use of a

fully comprehensive system. That's why the concept of the asset life-cycle - the start-to-end existence of your assets - is a fundamental.

RAM's product suite has been designed with the complete cycle in mind - fine-tuned to ensure it is able to address each and every stage of an asset's life and confident that from acquiring to retiring, all assets can be maintained, utilised, accounted for, moved, revalued, tracked and disposed of as necessary.

Best of Breed Accounting Integrated with your Finance System

At the heart of the suite lies Asset4000 - a powerful, best-of-breed asset register that can control, track and record changes that occur during an asset's lifetime. A single, web-based repository, Asset4000 can be interrogated to provide accurate, up-to-date and historical data.

Asset4000 is available in several European languages including English, French, Spanish, German and Italian. In addition to this, its flexibility in allowing for user-definable fields means that you have the freedom to use your language, not ours. And because we understand that every business is different, Asset4000 allows you to benefit from customisable depreciation methods, user reporting facilities and the ability to import new assets from external files. The system is further enhanced with a unique Import Wizard, saving you time in uploading data and ensuring improved accuracy in data capture.

Any number of historic and/or current cost accounting books can be set up to allow different values and currencies to be associated with individual assets and, with the capacity to create fully comprehensive and detailed asset histories, inclusive of image functions and parent/child relationship views, keeping track of your assets has never been so simple.

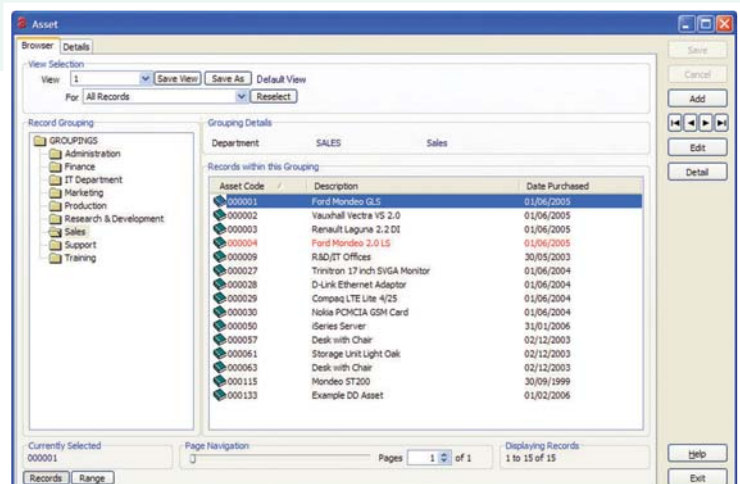
Asset4000 is a fully configurable module which combines flexibility and ease of use with fine detail and precision. It provides a seamless interface with leading general ledger products, thus enhancing your prior investments, whilst its familiar, Windows™ inspired interface means that users encounter a truly modest learning curve.

A Window into your New System

RAM understands the effort that goes into learning a new technology. Asset4000 was designed with this in mind.

The Asset Browser is a powerful search tool that shows a list of assets within the register with all the familiarity of a Windows™ browser. You can browse freely or restrict the search to specific criteria, such as asset category, cost or purchase date.

The Asset View is maintained throughout each session, making it easier to work with a subset of assets.



Real Asset Information

Once you have located an asset, full details can be viewed, maintained or updated through a single input screen (see below), enabling you to view all information

relating to this asset in one central location. This screen, known as the Asset Acquisition Screen, is divided into 4 sections: coding, description, set-up and current status.

Analysis

- 15 user-definable fields for sequencing browser selections and reports.
- Validated pick-lists for ease of data input and accuracy.
- Scalable design allowing analysis levels to be as simple or complex as required.
- Intelligence via automatic rules-based defaults enabling significant time savings.

Description

- 15 user-definable description lines enabling the storage of information unique to each individual asset.
- Prescribe mandatory fields to ensure fewer omissions.
- Screen can be fully tailored to suit the displayed asset.
- Information is both easily sourced and easily compiled for analysis.
- Reports are generated by searching according to your own pre-defined details.

The screenshot shows the 'Asset' window with the following data:

Analysis		Description	
Asset Code	000134	Description	Ford Mondeo ST220
Sub Category	CAR	Registration No	EA07 AAA
Category	MOTOR VEH	Capex	0306002
Cost Centre	SALES	Supplier	Dagenham Ford
Division	GROUP	Invoice Ref	FF-00399
Company	UK PLC	User	Barry Jones
Owned/Leased	OWNED	Bar Code	
		Lease No	Not Applicable
		Parent Id	000134

Financial Information		Current Status	
Date Purchased	01/02/2007	Last Period	2007 Mar
Date Capitalised	01/02/2007	Life Used	0.166666
Quantity	1	GBV	£18,950.00
Purchase Cost	£18,950.00	NBV	£18,160.42
Grant Value	£0.00	Per Depn	£394.79
Expiry Date	31/01/2011	YTD Depn	£789.58
Depn Acqn %	Period 100	Disposal Date	
Depn Code	SL	Transfer Out Date	
HCA Life in Years	4.000000		

Financial Information

- Asset4000's single screen for display provides details of initial asset acquisition, including item purchase date, date of capitalisation and the number of items that constitute the asset.
- User-definable value fields can be used to customise asset structures.
- Multiple accounting books are available through a single screen.
- Depreciation codes can be defaulted in allowing for minimal data input and elimination of errors.

Current Status

- Automatically populated with such information as life used, gross and net value and cumulative depreciation.
- Ensures users have real-time asset information.
- Automatically updates information when a period is closed.

Asset Transactions

Accessing a summary of events relating to a single asset is now easier than ever before. A full audit history for a number of events including disposals, transfers within or out of the asset register, asset splits, reliefs and revaluations can be accessed quickly and easily.

Asset4000 also enables you to physically and financially move an asset from one cost centre to another without re-keying information, thus saving time and reducing potential input error.

Reliefs and revaluations can be associated with individual books by simply checking the appropriate box.

Attaching Asset Images/Documents

The ability for the system to display images of assets and such associated documents as purchase invoices, agreements, etc. is of particular importance to many organisations.

Depreciation: Your Way

RAM has made manual, spreadsheet based depreciation a thing of the past. Asset4000's impressive, robust calculation tool makes processing depreciation both quick and easy.

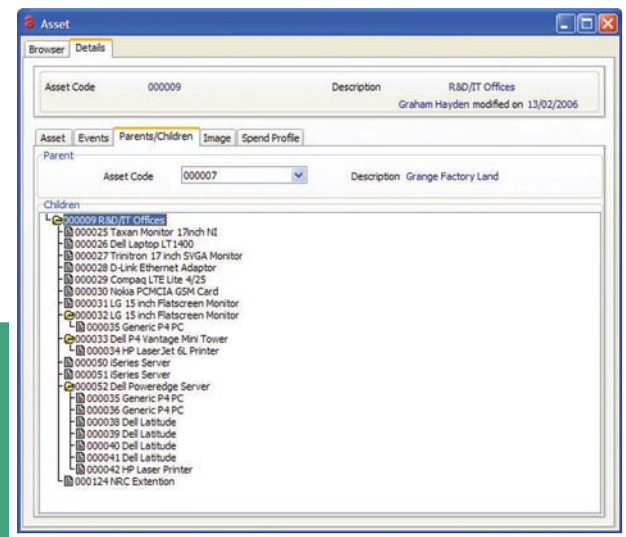
The Asset4000 module provides a portfolio of internationally agreed depreciation methods that do not require users to add their own formulae. All of such methods are entirely user-definable by asset, asset group and period of account, allowing for each asset, or group of assets, to be assigned the most appropriate method.

Year	Period	GBV	NBV	Per Deppn	YTD Deppn	Total Deppn	Life Used
2007	Feb	£18,950.00	£18,555.21	£394.79	£394.79	£394.79	0.083333
2007	Mar	£18,950.00	£18,160.42	£394.79	£789.58	£789.58	0.166666
2007	Apr	£18,950.00	£17,765.63	£394.79	£1,184.37	£1,184.37	0.249999
2007	May	£18,950.00	£17,370.84	£394.79	£1,579.16	£1,579.16	0.333332
2007	Jun	£18,950.00	£16,976.05	£394.79	£1,973.95	£1,973.95	0.416665
2007	Jul	£18,950.00	£16,581.26	£394.79	£2,368.74	£2,368.74	0.499998
2007	Aug	£18,950.00	£16,186.47	£394.79	£2,763.53	£2,763.53	0.583331
2007	Sep	£18,950.00	£15,791.68	£394.79	£3,158.32	£3,158.32	0.666664
2007	Oct	£18,950.00	£15,396.89	£394.79	£3,553.11	£3,553.11	0.749997
2007	Nov	£18,950.00	£15,002.10	£394.79	£3,947.90	£3,947.90	0.833330
2007	Dec	£18,950.00	£14,607.31	£394.79	£4,342.69	£4,342.69	0.916663
2008	Jan	£18,950.00	£14,212.52	£394.79	£4,737.48	£4,737.48	0.999996
2008	Feb	£18,950.00	£13,817.73	£394.79	£5,132.27	£5,132.27	1.083329
2008	Mar	£18,950.00	£13,422.94	£394.79	£1,184.37	£5,527.06	1.166662
2008	Apr	£18,950.00	£13,028.15	£394.79	£1,579.16	£5,921.85	1.25
2008	May	£18,950.00	£12,633.36	£394.79	£1,973.95	£6,316.64	1.333325
2008	Jun	£18,950.00	£12,238.57	£394.79	£2,368.74	£6,711.43	1.416658
2008	Jul	£18,950.00	£11,843.78	£394.79	£2,763.53	£7,106.22	1.499991
2008	Aug	£18,950.00	£11,448.99	£394.79	£3,158.32	£7,501.01	1.583324
2008	Sep	£18,950.00	£11,054.20	£394.79	£3,553.11	£7,895.80	1.666657

Hierarchical Relationships

Asset4000's 'Parent/Child' tab enables the user to establish hierarchical relationships or key dependencies between assets, neatly displaying such links pictorially in collapsible branches (much like the file structure used by Windows™ Explorer).

A typical example might be the association between PC and software licence, where the PC is the 'parent' and the licence assumes the role of 'child'. The option to transfer or dispose of the child asset will subsequently follow the transfer or disposal of the parent asset.



With the ability to calculate depreciation over multiple accounting periods, the system affords users the freedom to perform period re-runs.

Depreciation, whether for individual assets or a number of grouped assets, is calculated in a single, easy step - by simply clicking the 'process' button.

Period Asset Costs

Asset4000 provides you with the ability to compile a full history of the financial information stored against any single asset on a period-by-period basis. Both historical and forecast details can be accessed for net book value, period depreciation charge, year-to-date depreciation and total depreciation.

Comprehensive Reporting and Forecasting

Composing reports and forecasts can constitute a lengthy, arduous and costly process that is often subject to human error. With its powerful report engine providing over 40 standard reporting structures as well as a comprehensive range of user-definable templates, Asset4000 removes the need to rely on third party report writers.

A common reporting function is provided across all areas of the system, ensuring you have a single intuitive method of analysing and extracting asset information.

Asset4000 enables users to create reports both quickly and easily and has been proven to significantly accelerate the year-end reporting process.

As with the 'Asset Browser', Asset4000's reporting tool enables users to select data according to a number of specifications including asset type, purchase value,

depreciation code and capitalisation date.

Reports can be produced for each accounting book set up within the system to show the status of assets as at any accounting period. This may be the most recent or, for example, a forecast for the end of the year. Three levels of sequencing are available for each report. You might order your results according to asset type, cost centre and then department. Alternatively, you may prefer to gather information based on a single field. Reports can be set up to begin a new page when sequencing values change.

The production of reports is made simple with Asset4000. Output can be quickly transformed from a summary into a detailed, professional analysis. Reports can be viewed on screen, sent to the printer or exported to such business tools as MS Excel™.



Taking the Rest of the World into Account

If, like RAM, your company operates in many different countries, the necessity for international accounting features is imperative. With the increasing emphasis on corporate governance regulations, this requirement becomes more prevalent. Designed with this in mind, Asset4000 incorporates a range of accounting features such as multi-book, multi-currency and multi-lingual functionality, as well as compliance with both European and US accounting standards.

Multi-book

Core asset information can be shared across any number of books with different sets of figures, enabling compliance with both local and group depreciation policies. Information such as existing analysis codes, descriptions, acquisition dates and capitalisation periods can remain constant across all books, whilst details like asset life, depreciation rules and residual values can be book dependant.

Transactions such as full or partial disposals, transfers, splits, reliefs and revaluations can be applied across all books.

Multi-currency

Each accounting book is independently configurable to meet international accounting regulations.

Asset4000 complies with US Federal Tax rules, including acquisition conventions and the Modified Accelerated Cost Recovery System (MACRS) declining balance methods of depreciation.

European depreciation rules are applied to individual books, for example, taking into account the differences in the double declining balance depreciation rule between some EU Member States.

Multi-lingual

From menu options to information messages, field categories and help guides, Asset4000 is available in English, French, Spanish, German and Italian, providing each individual user with the flexibility to define the language in which the system is viewed.

Compliance

With corporate governance regulations including Sarbanes-Oxley (SOX), IFRS, IAS, UK/US GAAP and The Turnbull Guidance now demanding ever increasing levels of accountability from finance departments, it has never been more important to have a fixed asset solution that can assist you in meeting these new regulations.

Asset4000 will provide you with the confidence to help you meet your key compliance challenges by giving instant access to a comprehensive audit trail and flexible reporting functionality as well as delivering data security and continuity.

Security of data is critical to compliance. Security defined at an individual level ensures that budgetary, financial and

other confidential information can be viewed only by those who need to see it and safely hidden from those who don't.

Incorporated into Asset4000 is a powerful and technically advanced protection utility that requires a valid user-name and password combination prior to allowing access. Individual or group access rights may be designated accordingly to different users. Access can be restricted, where necessary, to single screens and actions and even to specific records within the register.

Asset4000i - The Remote Office Solution

Do you require remote access to your asset register? If so, Asset4000i could be the perfect solution for you. With the ability to allow multiple-user access to accurate and up-to-date centralised information securely from any web browser, Asset4000i is a web-enabled solution for managing fixed assets and inventory items easily and efficiently.

Enhanced security features guarantee the encryption of any information sent or received and direct access to the centralised asset register ensures that any changes are taken into effect in real-time so as to maintain the accuracy of the database.

In much the same way as the Asset4000's 'Parent/Child' tab, collapsible branches facilitate navigation through the register, highlighting any key information such as asset events, costs, transactions and hierarchical relationships.

Asset4000i offers the same advanced search facilities as Asset4000, and capacitates the same reporting and international accounting features.

User Benefits of Asset4000i

- Finance personnel can view a summary of asset information instantly and at all times.
- The system provides an easily implemented centralised asset database for consolidation.
- The collapsible branch function allows all asset information to be easily accessible by the asset manager.
- The asset register can be updated quickly and easily and includes a comprehensive audit trail.
- Asset4000i can be made available to remote/satellite offices offering widely dispersed organisations a cost effective solution with a low footprint.
- Asset4000i offers live database access through your own Intranet or via VPN.

Digesting Asset4000

This comprehensive, easy to use module provides a structured yet flexible facility which fully integrates with other vital management tools.

It provides users with a system that can control and track changes to an asset throughout its life-cycle from the moment it is entered into the system.

Highlights and Benefits:

- A dedicated solution to manage asset accounting, combining the flexibility of spreadsheets with the security of an accounts package.
- A single input screen is provided for the fast addition and update of assets.
- Each asset record contains a unique identifier and provides the user with the facility to incorporate existing analysis codes (e.g. category, cost centre, department, company), multiple description lines, purchase cost, purchase and capitalisation dates, asset life and depreciation rule, quantity, residual value, grant value and foreign currency amount.
- Transaction types include full and partial disposals, transfers, reliefs, revaluations and splits.
- The audit file holds a history of all user actions, showing which records were affected and the before/after detail.
- Depreciation methods are completely user-definable by asset group and period of account. Costs are retained for past periods and produced for current and future periods as required.
- Utilises a full range of standard and user-definable reports with up to thirty levels of analysis for comprehensive enquiries and reporting.
- Full asset history, advanced security features and multi-book and currency functionality to assist compliance with all corporate governance regulations, including Sarbanes-Oxley (SOX), J-SOX, IFRS, IAS, UK/US GAAP and the Turnbull guidance.
- Data links provided for seamless integration with general ledgers and maintenance reporting tools. The register also utilises asset tracking facilities, incorporating the leading barcode scanning technology.
- Financial periods can be opened and closed at any point (subject to user-defined security privileges).
- Annual Gross Summary report enabling instant access to asset analysis reports.
- Generation of year-end reports, enabling considerable time savings.
- Assets can be arranged in terms of Parent/Child relationships, enabling users to establish key dependencies and hierarchies.

RAM - The Complete Solution

RAM takes pride in providing a start-to-end solution for clients. You will be given the information on which to base your decision, the software itself, the technical expertise to get started and the required support throughout.

In addition to software solutions, RAM offers:

Training - On Site/Off Site

Experience tailored, onsite training or group training sessions at the RAM Training Centre. Courses cover the full range of modules and cater for all skill levels.

Audit Services

RAM offers a range of full audit services including data collection, barcode labelling and scanning for both capitalised assets and inventory items.

Consultancy

RAM's consultancy team offers a wealth of project implementation experience across all vertical markets.

Data Healthcheck

Whether migrating from an existing RAM solution or moving from an alternative system, our technical team can provide expertise in transferring the data to maintain system security. To assist clients to get the best from RAM's software, the helpdesk offers a healthcheck service. This process evaluates data construction and advises on business processes.

Bespoke Development & Interfaces

RAM's dedicated development team can evaluate, advise on, develop and supply to company specific requirements.